

MOBIUS 2-BAY FAN REPLACEMENT INSTRUCTIONS

1. Remove screws from the back and bottom of the unit.



2. Slide off the outer shell.



3. At the back of the unit, the fan is attached to the Mobius with **two** screws. Use the right angle screwdriver to **loosen** the screw attached at the lower end of the fan.



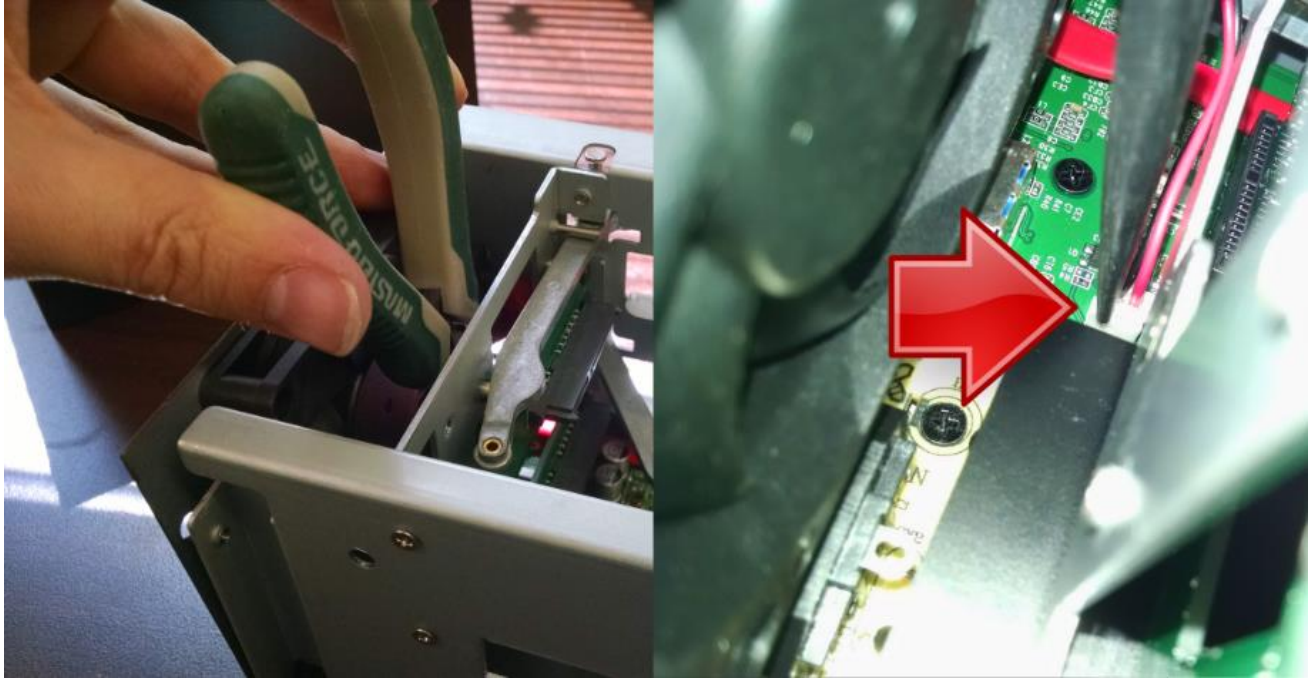
Then, open the bottom bay door on the Mobius and use a thin Phillips-head screwdriver to **remove** the screw completely.



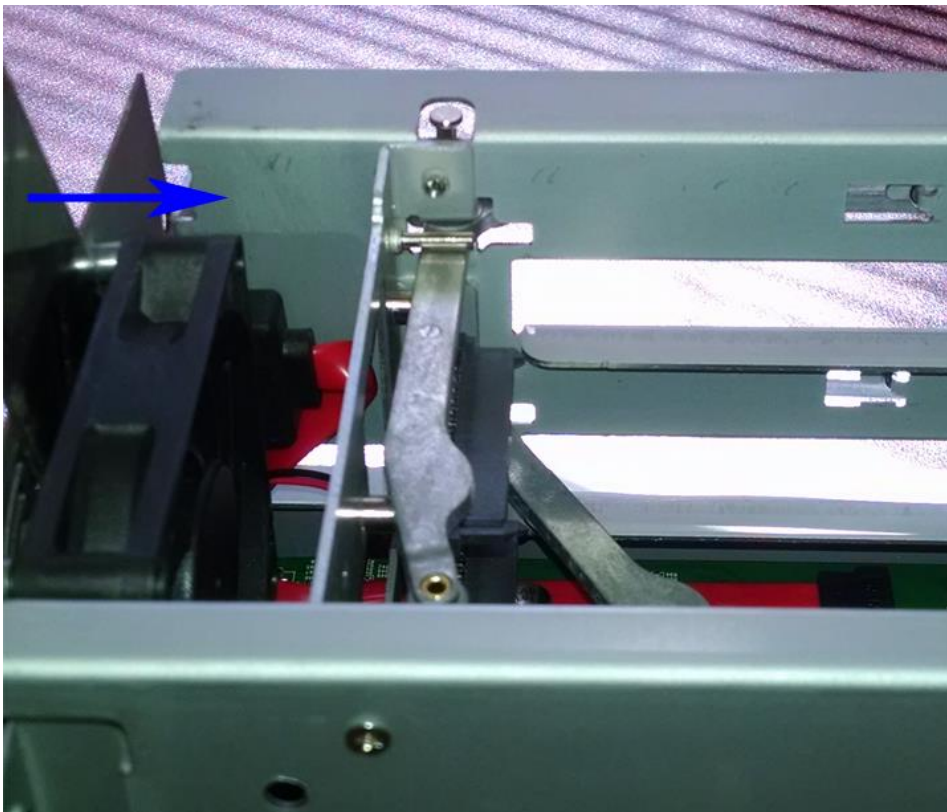
4. Remove the screw at the upper end of the fan with a Phillips head screw driver.



5. Unplug the fan from the Mobius circuit board. This is most easily accomplished by reaching into the unit with a needle nose pliers and pulling up on the connecting plug.



6. Carefully slide the fan off of the mounting posts. (Note: The fan will feel snug when removing it from the posts.)



INSTALLING THE NEW FAN:

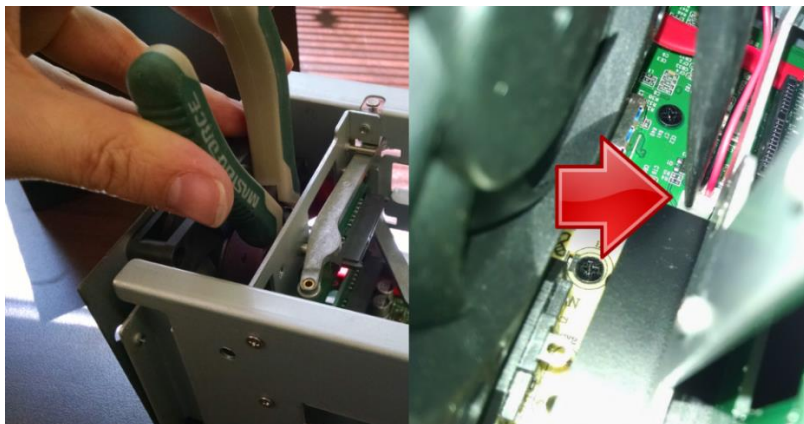
1. Carefully mount the new fan inside the unit, making sure the wires and connecting plug are facing downward and that the sticker label is facing the outside of the Mobius.



2. Attach the two screws to the mounting posts on the upper end of the fan.



3. Insert the fan's connecting plug into the circuit board socket with a needle nose pliers.



4. Slide the outer shell back on to the Mobius and attach it with the screws that were removed earlier.